

Installation Recommendations for nora dryfix™ ed

The **subfloor** must fulfil the requirements of the country-specific standards regarding the readiness for installation.

At the time of installation, the subfloor temperature must be **at least 15° C**. Ensure that the nora[®] floor covering has the required subfloor temperature. Especially in winter time, nora[®] floor coverings have to be stored on site for several days.

The subfloor may need to be primed with a suitable dispersion primer, and levelled completely with a suitable level compound. Prime polished or smoothed surfaces with a suitable dispersion primer diluted with clear water in a mixing ratio of 1:1 to bind any remaining dust particles. Allow primed surface to dry.

nora dryfix™ ed can also be laid on smooth existing coatings. These, however, must be permanently and securely bonded to the subsurface and must not have any cavities.

Please make sure the material is properly stored on site. Rolls have to be stored upright! Tiles all have to be stacked accurately, face to face and back to back.



All floor coverings that are installed with nora dryfix™ ed must always be sealed using nora[®] 1-component cold weld. Execution immediately after installation.

The sealing of the joints with nora[®] 1-component cold weld can be carried out in different ways, please see our “Installation Recommendations – Joint sealing of nora[®] floorings” Please be aware that the drying time for the cold weld is at least 12 hours.

Joint sealing is not equivalent to a mandatory sealing according to any country specific standard.

Material defects which are visible before installation cannot be acknowledged when claimed after the installation.

We recommend to install noraplan[®] tiles and square norament[®] tiles in broadloom fashion.

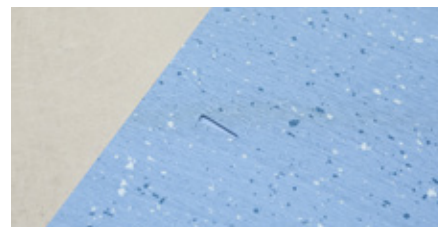
Please also see our **“General remarks** for the installation of nora[®] floor coverings, stairtreads and accessories” as well as the installation recommendations norament[®] and noraplan[®].



Required cutting tools



Required tools for the installation



Observe the direction of the arrow on the back of the floor covering and always lay the sheets and tiles in the same direction

Proceeding

1. Install nora dryfix™ ed on the surface, making sure to overlap the seams of the 75 cm-wide strips by approx. 1–2 cm.

Tip: It is best to work in pairs. First unroll 1–2 linear metres of nora dryfix™ ed precisely into position. One person can then continue unrolling the tape while the other person can press down the nora dryfix™ ed onto the substrate, using a brush to remove any air bubbles.



2. Continue to install nora dryfix™ ed this way until the entire surface is covered.



3. You can either trace-cut (using a ruler as a guide) or double-cut the seam between two nora dryfix™ ed strips. Take care not to leave any gaps wider than 2 mm.



4. Cover the entire area with noraplan[®] sheets or tiles, or norament[®] tiles. You can find detailed recommendations on how to install nora[®] floor coverings at www.nora.com.



5. For sheet flooring, fold back half of its length; for tiles arranged in a row, work your way from the center and lift each tile up as required.

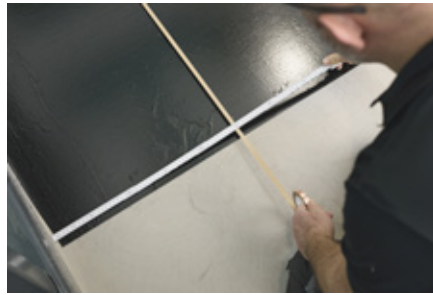


6. Cut and remove the protective paper of nora dryfix[™] ed, leaving an approx. 10 cm length from the flooring. Fold this 10 cm length underneath the flooring that has been folded back. This is meant to keep dirt particles away from the adhesive layer. In case nora dryfix[™] ed is cut through, please connect both parts with a copper strip.

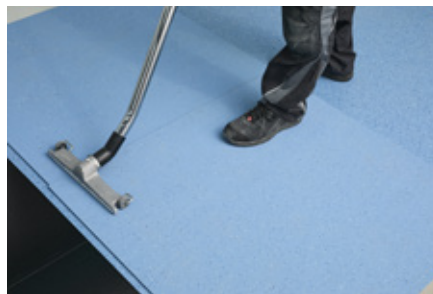
Tip: Do not crumple up the waste protective paper, but rather lay them on each other and roll them together after work has completed to minimize the volume of waste.



7. Install the copper strip on top of nora dryfix™ ed according to the layout mentioned below. Please note that each sheet nora dryfix™ ed needs to be connected to a copper strip and that the adhesive side of the copper strip needs to be aligned upwards.



8. Vacuum the back of the flooring and position the tile or sheet.



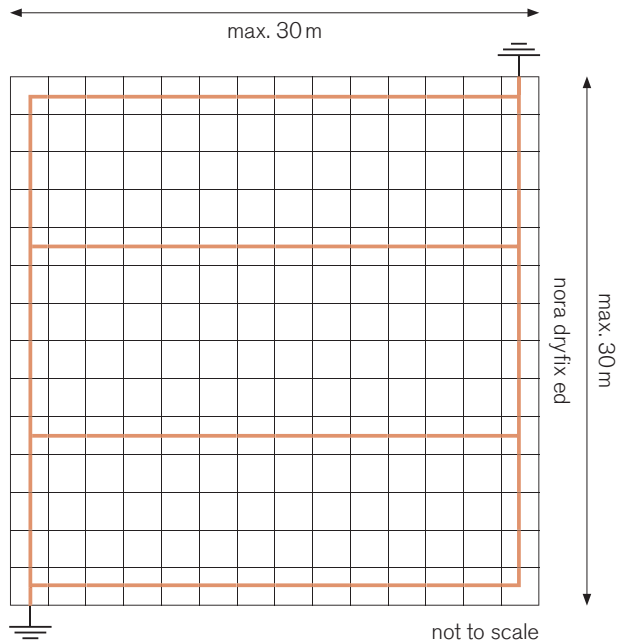
9. Apply pressure to the flooring and roll it using a roller.



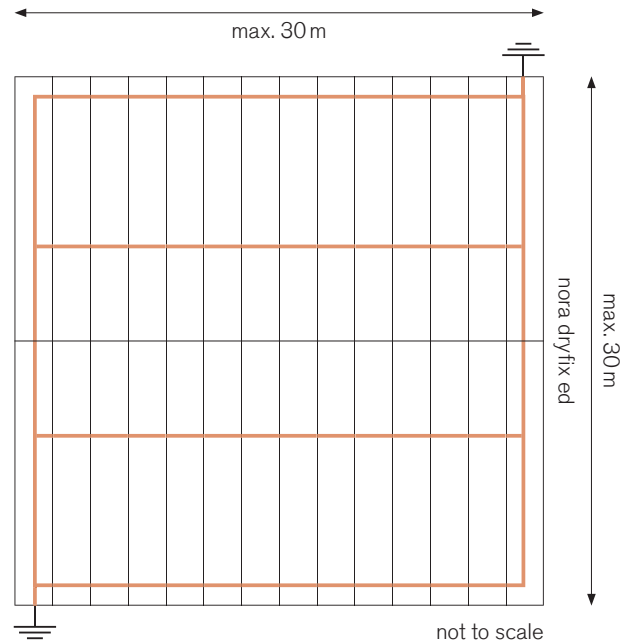
10. Repeat steps 5 to 9 for the rest of the surface.

Examples of a conductive and dissipative installation of norament[®]/noraplan[®] ed/ec

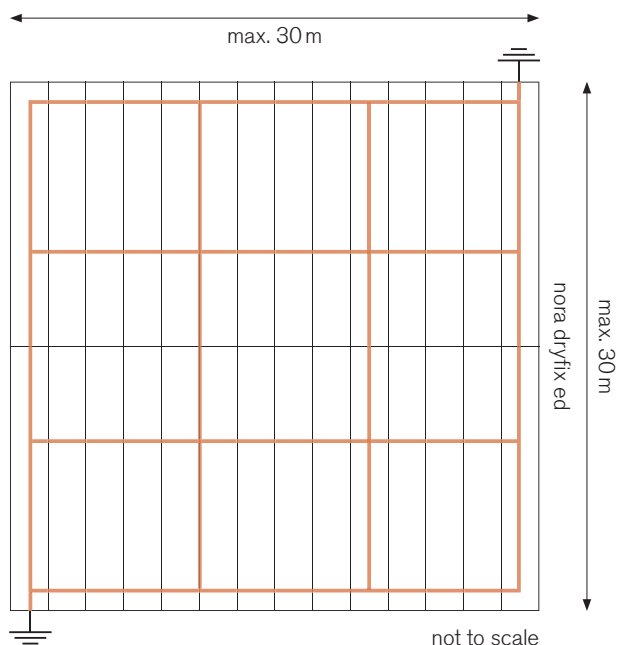
norament[®] ed/ec



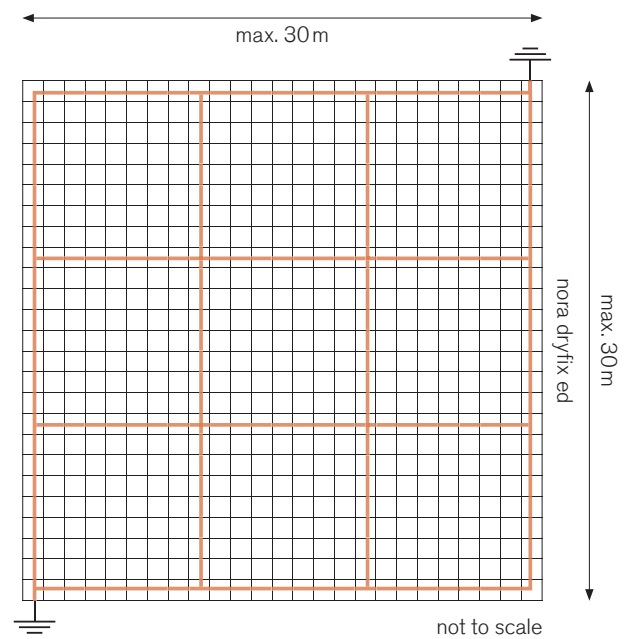
noraplan[®] ed



noraplan[®] ec



noraplan[®] ed/ec tiles



Legend:

- Tile/Sheet edge
- Copper strip
- ⏏ Grounding point

For rooms smaller than shown above, it is necessary to install a copper strip all the way round the perimeter of the room.
For rooms exceeding a width and length of 10 m, a cross-wise connection every 10 metres is necessary.
For rooms larger than approx. 40m², at least two connections to the earthing points are required.

Contact:

Contact details, local branches or authorised retailers, as well as other information can be found at www.nora.com.
E-Mail: info@nora.com

Link to the video:

www.nora.com/installation

