




BEFORE USING THE STEAM GENERATOR, READ AND FOLLOW THIS INSTRUCTION MANUAL. PLEASE READ THE SAFETY INSTRUCTIONS ON THIS HANDBOOK BEFORE PROCEEDING WITH THE FIRST USE.

-  **Attention!! Use only distilled water**
-  **Attention!! Hot surface**
-  **Attention!! Steam... burning danger**



SAFETY REGULATIONS

The electric supply connection shall be made by a qualified electrician and comply with IEC 60364-1.

It is recommended that the electric supply to this machine should include either a residual current device that will interrupt the supply if the leakage current to earth exceeds 30ma for 30ms or a device which will prove the earth circuit and the outlet used should be grounded. Do not use extension cords.

SAFETY VALVE This machine is equipped with two safety valves, able to ensure the safety of the machine itself in case other primary control devices are inefficient (due to a failure). Due to the extreme importance of these components and as not to compromise the safety of the machine, it is recommended to provide to check them and to substitute them through an authorized service center every 2 years starting from the purchasing date. For parts & service, please contact nora technical dept. 1-800-336-5096.

PRESSURE SWITCH This machine is equipped with a pressure switch able to check and to maintain the pressure under certain preset limits (ref. "rated pressure" on the technical label underneath the machine). In case there would be a steam leakage on the lower side of the machine, it means that the functioning of this device has been compromised and the safety valve has been involved as to limit the boiler's internal pressure.

It is recommended not to use the machine, immediately unplug the machine from the power feeding and call the service center.

MUD DRAIN FROM THE BOILER The machine is equipped with a

warning system "mud drain". The writing CALC will appear on the display to indicate that it is necessary to proceed with the boiler cleaning. The opening of the drain cap has to be strictly carried out when the machine has been switched off (plug not inserted) for at least 5 hours. See Maintenance of steam cleaner in this guide.

ATTENTION. Do not use the appliance within the range of persons unless they wear protective clothing.

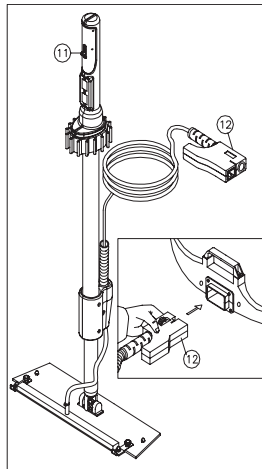
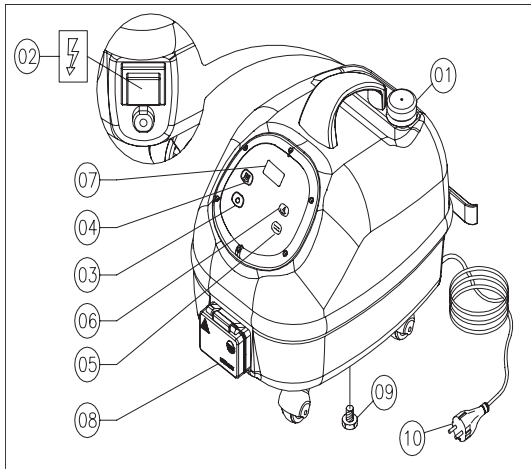
ATTENTION. The high pressure jets can be dangerous if not used properly. The jet does not have to be directed against persons, electrical devices under tension or the unit itself.

Do not direct the jet against yourself or others in order to clean clothes or footwear. Disconnect power before effectuating maintenance on user's responsibility. This machine is not intended for use by persons (including children) with reduced physical, sensory or mental capabilities, or lack of experience and knowledge. Monitor the children so they cannot play with the machine. To ensure the machine's safety, use only original spare parts from the manufacturer or spare parts approved by the manufacturer. For parts & service, please contact nora technical dept. 1-800-336-5096.

ATTENTION. Pressure hoses, fitting and couplings are important for the safety of the machine. Use only those recommended by the manufacturer.

Do not use the machine if the power cord or other important parts of the machine are damaged, i.e. safety devices, pressure hoses and trigger gun. The hand-arm vibration data, referred to this device, are not mentioned as they are below 2.5 m/s².

Technical data - Generator			
		EU: nora pro steamer Version 230 V	US: nora pro steamer Version 120 V
Steam boiler		AISI 304 stainless steel (with heating element which can be replaced)	
Chassis		Upper and lower housing: PO4 steel	
Steam boiler volume	l	1,5	
Water tank	l	3	
Working pressure	bar/kPa	8	800
Permissible Steam Pressure	bar/kPa	12	1200
Max. Steam production	Kg/h	3,8	2,64
Max. Steam T°	°C/°F	174 °C	345 °F
Kickback forces	N	<20	
Voltage	V-Hz	230 - 50/60	120 - 50/60
Maximum output	kW	2,45	1,65
Steam boiler output	kW	2,4	1,6
Power cable	m/feet	5	16,4
Mass	kg/lb	15	33



- 1) Cold (Distilled) water tank cap
- 2) General power switch
- 3) Stand-by-switch
- 4) Boiler switch
- 5) "Low water" indicator light
- 6) "Steam ready" indicator light
- 7) Digital thermometer, pressure gauge and hour meter
- 8) Accessory connection / steam outlet
- 9) Drain cap
- 10) Power cord with plug
- 11) Safety switch
- 12) Steam plug

USING INSTRUCTIONS

Remove the tank cap (1) and add distilled water only, **all other liquids can damage the generator permanently.** Insert the plug (10) into an electrical outlet, Insert the steam plug (12) in the steam outlet (8) placed on the machine. Press well as the blocking hook has to guarantee the fixing of the tool. Attach standard size micro-fiber mop (5" x 18") to mop applicator head. Do not position the micro-fiber mop blocking the steam bar. The steam coming out of the steam bar should be able to come in contact with the surface of the nora flooring. Activate the general power switch (2) the buttons (3) and (4), wait for about 5 minutes until the indicator light (6) switches on which indicates the presence of steam inside the boiler. Press the safety switch (11) to let the steam out (is only functioning when the boiler switch (4) is active).

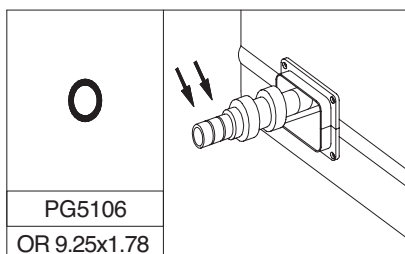
Refilling of water: Once the water tank (1) is empty the indicator light (5) will switch on followed by an intermittent acoustic signal, at the same time the system will disable the power of the heating element. Keep the switch (11) on the handgrip pressed in order to release all the steam from the boiler. Switch off the unit by the switch (3), refill the water tank and switch on the unit again (3). **Attention: if the watertank is filled without a prior switching off the machine, the low water indicator light will remain on and the unit will not function. Switch the unit off and on again in order to reset the low water indicator light.**

MAINTENANCE OF THE STEAM GENERATOR/ ELIMINATION OF SCALE DEPOSITS FROM THE BOILER

WARNING: SWITCH OFF THE ELECTRIC SUPPLY BEFORE PROCEEDING WITH THE USER'S MAINTENANCE. WE SUGGEST CLEANING THE BOILER ONLY WHEN THE MACHINE HAS COOLED DOWN (SWITCHED OFF FOR AT LEAST 5 HOURS).

The machine is equipped with a maintenance warning which is working by writing CALC on the display alternately with the visualized temperature.

When the sign lights up it is possible to finish the cleaning task, then disconnect the power plug and let the appliance cool down for at least 5 hours.



During the draining operation the power plug of the appliance must be disconnected from the electrical power outlet. It is essential to follow the above procedure to make sure that steam under pressure is no longer present inside the machine.

Put a basin under the unit and remove the lower drain cap (9), wait until the boiler is completely emptied.

Remove eventual deposits from the cap with running water, control the efficiency of the sealing on the bottom of the cap and if necessary substitute the sealing ring (contact your supplier for the spare part). Now it is possible to insert drain cap (9) again on the generator and control carefully that the drain cap (9) is screwed on properly. Insert again the power cord (10) into the electric power outlet and activate the switch (2) followed by the keys (3) and (4). We recommend to activate also the safety switch (11) to let out the air from the empty boiler. Wait until the refilling process has been completed (approx. 3 minutes).

Restore maintenance intervals CALC

Turn on the appliance by activating the switch (2) and the button (3), then again press the button (3) and keep it pressed for approximately 10 seconds, the writing CALC will disappear from the display and will only appear again for the next maintenance intervention.

HOUR METER: The device is equipped with two hour meters, one resettable by the user and one non resettable. To visualize the hours, turn off the unit by pressing the button (3) and subsequently press the button (4); every time you press this button you can read the respective hour meter 1 and hour meter 2. Resetting of the hour meter 2: Turn off the unit with the general power switch (2). Press and keep pressed the buttons (3) and (4), while you keep them pressed switch on the machine again by pressing the general power switch (2) on the back of the machine.

PRESSURE GAUGE: With the unit being turned on press and keep pressed the button (3) after some seconds the display will show the value of the pressure in bar inside the boiler, this data will remain visible on the display for 10 seconds. Afterwards the value of the temperature in °F will appear again.

ST-BY: This machine is equipped with an energy saving mode, if it's not utilized for an interval of 60 minutes it automatically switches off. To activate or deactivate this function, switch the unit off, press and keep pressed the boiler switch (4) for some seconds. The display will show T.ON or T.OFF depending on the previously selected setting.

MAINTENANCE OF THE ACCESSORY: Grease occasionally joints on the accessory.

FOR WARRANTY, PARTS & SERVICE: Contact nora Technical Dept. 1-800-336-5096.