

nora[®] systems Revit materials

nora[®]

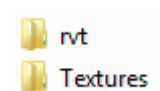
nora Revit materials

Version 2018/02/09

© Copyright nora. We reserve the right to make technical changes to the Revit libraries without prior notice.

This document describes the integration of nora Revit materials into your local Revit environment. The library is available as Revit 2016 version and can be used in 2016 version or higher versions

1. Unpack the zip file:



Unpack the zip file **nora_Revit_2016_Library.zip** into a directory of your choice on your computer.



This directory contains 4 Revit projects.



This project contains all nora materials in the German language version.



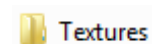
This project contains all nora materials in the English language version.



This project contains all nora materials in the Spanish language version.



This project contains all nora materials in the French language version.



The 'Textures' directory contains the jpgs of the nora Revit materials.

2. Set an additional render presentation path

To ensure that the nora textures are displayed correctly in the realistic representation and when rendering in Revit, add an additional render presentation path in the 'Options':

1. In the menu browser click on 'Options'.
2. In the 'Options' dialogue in the 'Renders' tab add the directory into which you unpacked the textures from the zip file.

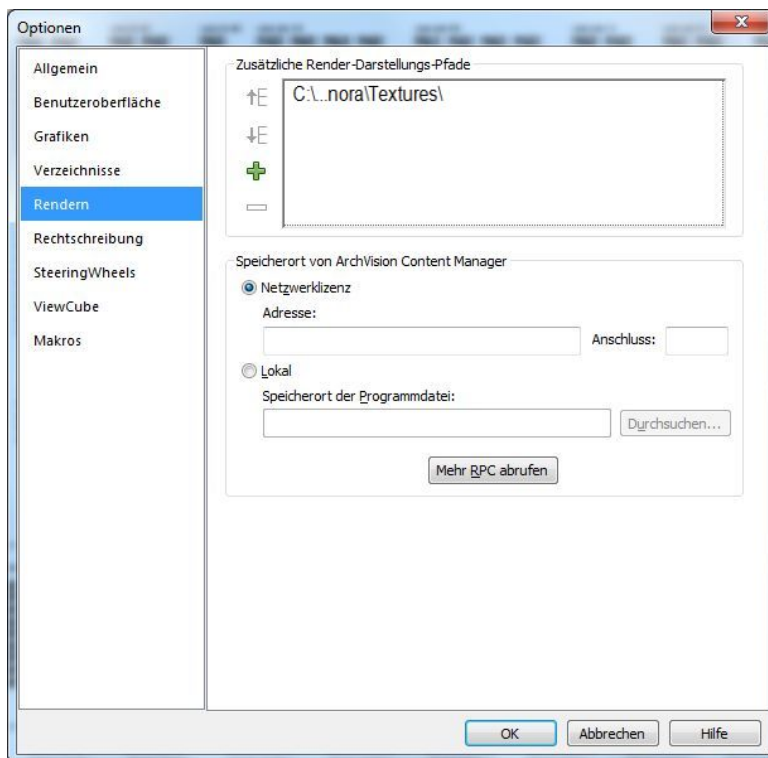


Fig. Revit Options dialogue

3. Integrate nora materials into a project

As the nora materials are completely integrated into the Revit environment, you can use the standard Revit workflow to use them in your project:

- Copy and Paste using the clipboard by selecting a cover component in the drawing area or in the project browser

4. nora components lists

The properties of nora materials are also available as components lists.

A	B	C	D	E	F	G	H	I	J	K	L
Hersteller	Produktfamilie	Produkt	Artikel	Spezifikation	Größe	Dicke	Farbnummer	Maßbeständig	Zigaret	Rutschhemm	Trittschalverbe
nora Systems GmbH W	norament	norament 825	1902	Fiesen	501mm x 501mm	3.2mm	0007	+/- 0.3 %	✓	R9	9dB
nora Systems GmbH W	norament	norament 825	1902	Fiesen	501mm x 501mm	3.2mm	0170	+/- 0.3 %	✓	R9	9dB
nora Systems GmbH W	norament	norament 825	1902	Fiesen	501mm x 501mm	3.2mm	0214	+/- 0.3 %	✓	R9	9dB
nora Systems GmbH W	norament	norament 825	1902	Fiesen	501mm x 501mm	3.2mm	0319	+/- 0.3 %	✓	R9	9dB
nora Systems GmbH W	norament	norament 825	1902	Fiesen	501mm x 501mm	3.2mm	0702	+/- 0.3 %	✓	R9	9dB
nora Systems GmbH W	norament	norament 825	1902	Fiesen	501mm x 501mm	3.2mm	0716	+/- 0.3 %	✓	R9	9dB
nora Systems GmbH W	norament	norament 825	1902	Fiesen	501mm x 501mm	3.2mm	0733	+/- 0.3 %	✓	R9	9dB
nora Systems GmbH W	norament	norament 825	1902	Fiesen	501mm x 501mm	3.2mm	0749	+/- 0.3 %	✓	R9	9dB
nora Systems GmbH W	norament	norament 825	1902	Fiesen	501mm x 501mm	3.2mm	0846	+/- 0.3 %	✓	R9	9dB
nora Systems GmbH W	norament	norament 825	1902	Fiesen	501mm x 501mm	3.2mm	0866	+/- 0.3 %	✓	R9	9dB
nora Systems GmbH W	norament	norament 825	1902	Fiesen	501mm x 501mm	3.2mm	0882	+/- 0.3 %	✓	R9	9dB
nora Systems GmbH W	norament	norament 825	1902	Fiesen	501mm x 501mm	3.2mm	0884	+/- 0.3 %	✓	R9	9dB
nora Systems GmbH W	norament	norament 825	1902	Fiesen	501mm x 501mm	3.2mm	0890	+/- 0.3 %	✓	R9	9dB
nora Systems GmbH W	norament	norament 825	1902	Fiesen	501mm x 501mm	3.2mm	2074	+/- 0.3 %	✓	R9	9dB
nora Systems GmbH W	norament	norament 825	1902	Fiesen	501mm x 501mm	3.2mm	2079	+/- 0.3 %	✓	R9	9dB
nora Systems GmbH W	norament	norament 825	1902	Fiesen	501mm x 501mm	3.2mm	2685	+/- 0.3 %	✓	R9	9dB
nora Systems GmbH W	norament	norament 825	1902	Fiesen	501mm x 501mm	3.2mm	6172	+/- 0.3 %	✓	R9	9dB
nora Systems GmbH W	norament	norament 825	1902	Fiesen	501mm x 501mm	3.2mm	6173	+/- 0.3 %	✓	R9	9dB
nora Systems GmbH W	norament	norament 825	1902	Fiesen	501mm x 501mm	3.2mm	6191	+/- 0.3 %	✓	R9	9dB
nora Systems GmbH W	norament	norament 825	1902	Fiesen	501mm x 501mm	3.2mm	6192	+/- 0.3 %	✓	R9	9dB
nora Systems GmbH W	norament	norament 926	354	Fiesen	1004mm x 1004m	4mm	0007	+/- 0.3 %	✓	R9	12dB
nora Systems GmbH W	norament	norament 926	354	Fiesen	1004mm x 1004m	4mm	0170	+/- 0.3 %	✓	R9	12dB
nora Systems GmbH W	norament	norament 926	354	Fiesen	1004mm x 1004m	4mm	0214	+/- 0.3 %	✓	R9	12dB
nora Systems GmbH W	norament	norament 926	354	Fiesen	1004mm x 1004m	4mm	0319	+/- 0.3 %	✓	R9	12dB
nora Systems GmbH W	norament	norament 926	354	Fiesen	1004mm x 1004m	4mm	0702	+/- 0.3 %	✓	R9	12dB
nora Systems GmbH W	norament	norament 926	354	Fiesen	1004mm x 1004m	4mm	0716	+/- 0.3 %	✓	R9	12dB
nora Systems GmbH W	norament	norament 926	354	Fiesen	1004mm x 1004m	4mm	0733	+/- 0.3 %	✓	R9	12dB
nora Systems GmbH W	norament	norament 926	354	Fiesen	1004mm x 1004m	4mm	0749	+/- 0.3 %	✓	R9	12dB
nora Systems GmbH W	norament	norament 926	354	Fiesen	1004mm x 1004m	4mm	0846	+/- 0.3 %	✓	R9	12dB
nora Systems GmbH W	norament	norament 926	354	Fiesen	1004mm x 1004m	4mm	0866	+/- 0.3 %	✓	R9	12dB
nora Systems GmbH W	norament	norament 926	354	Fiesen	1004mm x 1004m	4mm	0882	+/- 0.3 %	✓	R9	12dB
nora Systems GmbH W	norament	norament 926	354	Fiesen	1004mm x 1004m	4mm	0884	+/- 0.3 %	✓	R9	12dB

Fig. components lists for materials