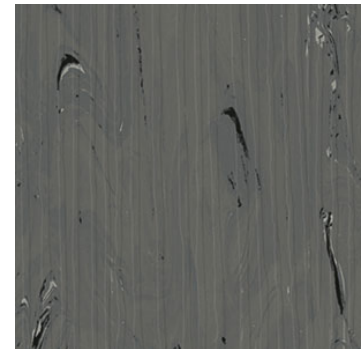


noraplan[®] valua nTx

PLANK

Rubber floor covering in a linear structured surface for heavy traffic areas, with a calmingly tranquil color palette in two unique design options that offer varying degrees of contrast combined with a seamless natural texture. With nora[®] nTx pre-applied adhesive backing.

- Good for heavy traffic
- Superior footfall sound absorption
- Excellent slip resistance
- Increased safety thanks to high fire-retardant properties
- Seamless installation
- No coatings needed



Product Data

Product	noraplan [®] valua nTx 2.0 mm plank resilient floor covering, Articles 211B, 212B & 213B
Description	nora [®] vulcanized rubber compound 913 with environmentally compatible color pigments that are free of toxic heavy metals like lead, cadmium or mercury.
Characteristics	<p>Material Dimensions: 211B: 24.015 inches by 8.07 inches (610 mm by 205 mm) 212B: 24.015 inches by 12 inches (610 mm by 305 mm) 213B: 48.03 inches by 15.94 inches (1220 mm by 405 mm)</p> <p>Thickness: 0.08 inches (2.0 mm) Dimensional Stability: Meets requirements Composition: Homogeneous rubber compound with a random scattered design Colors: 6 Standard; additional colors available upon request Surface: Linear structured</p>

Technical Data

Static Load Limit	ASTM F970, Residual compression of 0.002" with 800 lbs. ≤ 0.005" with 250 lbs. is required
Rolling Load Limit	≤ 450 lbs. /sq. inch, no forklift traffic
Slip Resistance	ASTM D2047 Static coefficient of friction, Neolite dry 0.97 Neolite wet 0.85 ≥ 0.5 is required (not recommended for ramps)
Flammability	ASTM E648; NFPA 253; NBSIR 75 950, 0.98 Class 1, ≥ 0.45 watts/sq. cm is required
Smoke Density	ASTM E662; NFPA 256; NBS, 134 (flaming) and 109 (non-flaming) < 450 is required
Bacteria Resistance	ASTM E2180 and ASTM G21, resistant to bacteria, fungi, and micro-organism activity

Sound Absorption	ASTM E2179;ISO 140, Δ IIC 11, Lw8dB (compare only Δ values)
Hardness	ASTM D2240, Shore type "A", 92 achieved, ≥ 85 is required
CAN/ULC-S102.2	Surface Burning, FSC1 of 300 and SD of 1200

Environmental Attributes

Transparency	Environmental Product Declarations (EPD), Health Product Declarations (HPD) and Cradle (C2C) documentation is available for standard norament [®] and noraplan [®] floor coverings; for information visit www.nora.com/us
Manufactured Without	PVC (polyvinyl chloride) Plasticizers (phthalates) Halogens (chlorine)
Production Plant Certifications	ISO 9001:2000 ISO 14001
VOC Emissions	GREENGUARD Gold Certified for Low VOC Emissions CA 01350 Compliant

Installation

Site Conditions	The installation area must be fully enclosed, weather tight, and climate controlled between 63°F and 75°F and 40% to 60% ambient relative humidity (RH) for at least 48 hours prior, during and 72 hours after installation.
Adhesive	nora [®] nTx pre-applied adhesive
Unique Characteristics	Beveled edges offer a natural, individual look that is easy to clean and maintain Welding not required No moisture testing required Immediately open space to traffic with no down time Custom sizes available upon request

For complete installation instructions, refer to the nora[®] nTx Installation Guide.

Care and Cleaning

Refer to the noraplan[®] Maintenance Guides.

Wheel Types

No metal or hard plastic wheels, the shape of the contact surface of wheels must be flat with round edges. The shore hardness must be ≤ 90 type A.

Storage

nora[®] flooring can be stored within a temperature range of -5°F (-21°C) to 120°F (49°C) under the following conditions: Pallets shall remain intact, undamaged, not be stacked, be in a permanently dry environment, and with no direct sunlight. However, all adhesives and cold weld must remain at room temperature without freezing.

Warranty

nora[®] nTx Limited 10-year bond warranty and Limited 5-year warranty. See nora[®] nTx and nora[®] Limited Warranties.

For current nora[®] Installation Guides, Guide Specifications, Maintenance Guides, and Limited Warranties, please visit www.nora.com/us.

Updated: November 2018

nora systems, Inc.

9 Northeastern Blvd.
Salem, NH 03079
Toll free: 800-332-NORA
Phone: (603) 894-1021
Fax: (603) 894-6615
E-mail: info-us@nora.com
www.nora.com/us

