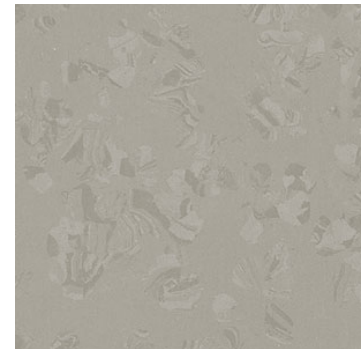


# noraplan<sup>®</sup> sentica ed TILE

Rubber flooring with a changing base color consisting of three harmoniously matched color components in a smooth surface for heavy traffic areas. Provides optimum ESD protection for electronic devices and equipment, protects against electrical shock, and is resistant to most oils and greases.

- Good for heavy traffic
- Superior footfall sound absorption
- Excellent slip resistance
- Increased safety thanks to high fire-retardant properties
- Seamless installation
- No coatings needed



## Product Data

Product	noraplan <sup>®</sup> sentica ed tile resilient floor covering, Article 2702
Description	nora <sup>®</sup> vulcanized rubber compound 948 with environmentally compatible color pigments that are free of toxic heavy metals like lead, cadmium or mercury.
Characteristics	Material Size: 24.015 inches by 24.015 inches (610 mm by 610 mm) Thickness: 0.08 inches (2.0 mm) Dimensional Stability: Meets requirements Composition: Homogeneous rubber compound with a random scattered design Colors: 12 Standard Surface: Smooth

## Technical Data

Static Load Limit	ASTM F970, Residual compression of 0.003" with 800 lbs. ≤ 0.005" with 250 lbs. is required
Rolling Load Limit	≤ 450 lbs. /sq. inch, no forklift traffic
Slip Resistance	ASTM D2047 Static coefficient of friction, Neolite dry 0.92 Neolite wet 0.89 ≥ 0.5 is required (not recommended for ramps)
Flammability	ASTM E648; NFPA 253; NBSIR 75 950, 1.0 Class 1, ≥ 0.45 watts/sq. cm is required
Smoke Density	ASTM E662; NFPA 256; NBS, 81 (flaming) and 122 (non-flaming) < 450 is required
Bacteria Resistance	ASTM E2180 and ASTM G21, resistant to bacteria, fungi, and micro-organism activity
Sound Absorption	ISO 140, Δ Lw6dB (compare only Δ values)
Hardness	ASTM D2240, Shore type "A", 92 achieved, ≥ 85 is required
CAN/ULC-S102.2	Surface Burning, FSC1 of 185 and SD of 1600
Static Generation	ANSI ESD S97.2, < 20 Volts

Decay Time	FTM 101 C 4046, < 0.25, (sec)
Conductivity	ASTM F150, $10^6 < 10^9$ (ohms)

### Environmental Attributes

Manufactured Without	PVC (polyvinyl chloride) Plasticizers (phthalates) Halogens (chlorine)
Production Plant Certifications	ISO 9001:2000 ISO 14001
VOC Emissions	GREENGUARD Gold Certified for Low VOC Emissions CA 01350 Compliant

### Installation

Site Conditions	The installation area must be fully enclosed, weather tight, and climate controlled between 63°F and 75°F and 40% to 60% ambient relative humidity (RH) for at least 48 hours prior, during and 72 hours after installation.
Adhesive	Absorptive substrates: use nora <sup>®</sup> ED 120 adhesive Non-absorptive substrates: Contact nora technical department
Unique Characteristics	Welding not required

For complete installation instructions, refer to the nora<sup>®</sup> Installation Guide.

### Care and Cleaning

Refer to the noraplan<sup>®</sup> maintenance guides.

### Wheel Types

No metal or hard plastic wheels, the shape of the contact surface of wheels must be flat with round edges. The shore hardness must be ≤ 90 type A.

### Storage

nora<sup>®</sup> flooring can be stored within a temperature range of -5°F (-21°C) to 120°F (49°C) under the following conditions: Pallets shall remain intact, undamaged, not be stacked, be in a permanently dry environment, and with no direct sunlight. However, all adhesives and cold weld must remain at room temperature without freezing.

### Warranty

Limited 5-year warranty. See nora<sup>®</sup> Limited Warranty.

For current nora<sup>®</sup> Installation Guides, Guide Specifications, Maintenance Guides, and Limited Warranties, please visit [www.nora.com/us](http://www.nora.com/us).

*Updated: November 2018*

#### **nora systems, Inc.**

9 Northeastern Blvd.  
Salem, NH 03079  
Toll free: 800-332-NORA  
Phone: (603) 894-1021  
Fax: (603) 894-6615  
E-mail: [info-us@nora.com](mailto:info-us@nora.com)  
[www.nora.com/us](http://www.nora.com/us)