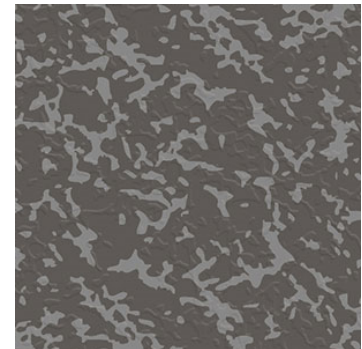


noraplan[®] Iona

TILE

Rubber flooring in a filigree design with contrasting colors and accents in a lightly structured surface for heavy traffic areas.

- Good for heavy traffic
- Superior footfall sound absorption
- Excellent slip resistance
- Increased safety thanks to high fire-retardant properties
- Seamless installation
- No coatings needed



Product Data

| | |
|-----------------|-------------------------------------------------------------------------------------------------------------------------------------------------------------------------------------------------------------------------------------------------------------------------|
| Product | noraplan [®] Iona 2.0 mm tile resilient floor covering, Article 266B |
| Description | nora [®] vulcanized rubber compound 913 with environmentally compatible color pigments that are free of toxic heavy metals like lead, cadmium or mercury. |
| Characteristics | Material Size: 24.015 inches by 24.015 inches (610 mm by 610 mm) Thickness: 0.08 inches (2.0 mm) Dimensional Stability: Meets requirements Composition: Homogeneous rubber compound with a random scattered design Colors: 24 Standard Surface: Textured |

Technical Data

| | |
|---------------------|-------------------------------------------------------------------------------------------------------------------------------|
| Static Load Limit | ASTM F970, Residual compression of 0.003" with 800 lbs. ≤ 0.005" with 250 lbs. is required |
| Rolling Load Limit | ≤ 450 lbs. /sq. inch, no forklift traffic |
| Slip Resistance | ASTM D2047 Static coefficient of friction, Neolite dry 0.93 Neolite wet 0.90 ≥ 0.5 is required (not recommended for ramps) |
| Flammability | ASTM E648; NFPA 253; NBSIR 75 950, 0.93 Class 1, ≥ 0.45 watts/sq. cm is required |
| Smoke Density | ASTM E662; NFPA 256; NBS, 152 (flaming) and 186 (non-flaming) < 450 is required |
| Bacteria Resistance | ASTM E2180 and ASTM G21, resistant to bacteria, fungi, and micro-organism activity |
| Sound Absorption | ASTM E2179; ISO 140, Δ IIC 11, Lw8dB (compare only Δ values) |
| Hardness | ASTM D2240, Shore type "A", 92 achieved, ≥ 85 is required |
| CAN/ULC-S102.2 | Surface Burning, FSC1 of 125 and SD of 370 |

Environmental Attributes

| | |
|---------------------------------|----------------------------------------------------------------------------------------------------------------------------------------------------------------------------------------------------------------------------------------------------------------------------------|
| Transparency | Environmental Product Declarations (EPD), Health Product Declarations (HPD) and Cradle (C2C) documentation is available for standard norament [®] and noraplan [®] floor coverings; for information visit www.nora.com/us |
| Manufactured Without | PVC (polyvinyl chloride) Plasticizers (phthalates) Halogens (chlorine) |
| Production Plant Certifications | ISO 9001:2000 ISO 14001 |
| VOC Emissions | GREENGUARD Gold Certified for Low VOC Emissions CA 01350 Compliant |

Installation

| | |
|------------------------|------------------------------------------------------------------------------------------------------------------------------------------------------------------------------------------------------------------------------|
| Site Conditions | The installation area must be fully enclosed, weather tight, and climate controlled between 63°F and 75°F and 40% to 60% ambient relative humidity (RH) for at least 48 hours prior, during and 72 hours after installation. |
| Adhesive | Absorptive substrates: use nora [®] AC 100 or dryfix 750 adhesives Non-absorptive substrates: use nora [®] dryfix 750 adhesive |
| Unique Characteristics | Welding not required. To better appreciate the products beauty and seamless design, it is recommended for use in applications where welding is not necessary. |

For complete installation instructions, refer to the nora[®] Installation Guide.

Care and Cleaning

Refer to the noraplan[®] Maintenance Guides.

Wheel Types

No metal or hard plastic wheels, the shape of the contact surface of wheels must be flat with round edges. The shore hardness must be ≤ 90 type A.

Storage

nora[®] flooring can be stored within a temperature range of -5°F (-21°C) to 120°F (49°C) under the following conditions: Pallets shall remain intact, undamaged, not be stacked, be in a permanently dry environment, and with no direct sunlight. However, all adhesives and cold weld must remain at room temperature without freezing.

Warranty

Limited 5-year warranty. See nora[®] Limited Warranty.

For current nora[®] Installation Guides, Guide Specifications, Maintenance Guides, and Limited Warranties, please visit www.nora.com/us.

Updated: November 2018

nora systems, Inc.

9 Northeastern Blvd.
Salem, NH 03079
Toll free: 800-332-NORA
Phone: (603) 894-1021
Fax: (603) 894-6615
E-mail: info-us@nora.com
www.nora.com/us