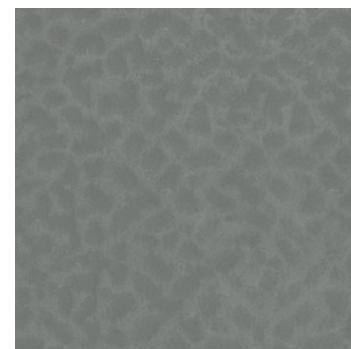


norament[®] hammered stairtreads

STAIR TREADS

Rubber flooring for steps with a solid, hammered surface.

- Good for very heavy traffic
- Superior footfall sound absorption
- Excellent slip resistance
- Increased safety thanks to high fire-retardant properties
- VI inserts available
- No coatings needed



Product Data

Product	norament [®] hammered 5.0mm stair treads, Article 479, 468, and 469
Description	nora [®] vulcanized rubber compound 926 with environmentally compatible color pigments that are free of toxic heavy metals like lead, cadmium or mercury.
Characteristics	<p>Material Dimensions:</p> <p>Length: 50.59 inches (1285mm), 63.54 inches (1614mm) and 78.89 inches (2004mm)</p> <p>Depth: 19.88 inches (505mm)</p> <p>Nosing Height: 1.77 inches (45mm)</p> <p>Thickness: 0.20 inches (5mm)</p> <p>Dimensional Stability: Meets requirements</p> <p>Composition: Homogeneous rubber compound with a random scattered design</p> <p>Colors: 5 Standard</p> <p>Surface: Hammered and smooth</p>

Technical Data

ASTM F2169	Type TS, Class 2, can be Group 1 and/or 2 and Grade 2
Static Load Limit	ASTM F970, Residual compression of 0.005" with 800 lbs. ≤ 0.005 " with 250 lbs. is required
Abrasion Resistance	ASTM D3389 1.1 lbs. (500g) load on H-18 wheel with 1000 cycles, 0.002 oz. (0.05g) weight loss; ≤ 0.035 oz. (1.0g) is required
Slip Resistance	ASTM D2047 Static coefficient of friction, Neolite dry 0.99 Neolite wet 0.95 ≥ 0.5 is required (not recommended for ramps)
Flammability	ASTM E648; NFPA 253; NBSIR 75 950, 0.92 Class 1, ≥ 0.45 watts/sq. cm is required
Smoke Density	ASTM E662; NFPA 256; NBS, 267 (flaming) and 130 (non-flaming) < 450 is required

Bacteria Resistance	ASTM E2180 and ASTM G21, resistant to bacteria, fungi, and micro-organism activity
Sound Absorption	ASTM E2179;ISO 140, Δ IIC 11, Lw11dB (compare only Δ values)
Hardness	ASTM D2240, Shore type “A”, 82 achieved, ≥ 70 is required
CAN/ULC-S102.2	Surface Burning, FSC1 of 70 and SD of 470

Environmental Attributes

Manufactured Without	PVC (polyvinyl chloride) Plasticizers (phthalates) Halogens (chlorine)
Production Plant Certifications	ISO 9001:2000 ISO 14001
VOC Emissions	GREENGUARD Gold Certified for Low VOC Emissions CA 01350 Compliant

Installation

Site Conditions	The installation area must be fully enclosed, weather tight, and climate controlled between 63°F and 75°F and 40% to 60% ambient relative humidity (RH) for at least 48 hours prior, during and 72 hours after installation.
Adhesive	Use nora® stepfix adhesive for all substrates
Unique Characteristics	No nose caulking required with most installations Visually impaired strips require the use of nora epoxy nose filler

For complete installation instructions, refer to the nora® Installation Guide.

Care and Cleaning

A post-installation cleaning must be performed before the area is occupied.

Refer to the nora® Maintenance Guides.

Wheel Types

No metal or hard plastic wheels, the shape of the contact surface of wheels must be flat with round edges. The shore hardness must be type A ≤ 90.

Storage

nora® flooring can be stored within a temperature range of -5°F (-21°C) to 120°F (49°C) under the following conditions: Pallets shall remain intact, undamaged, not be stacked, be in a permanently dry environment, and with no direct sunlight. However, all adhesives and cold weld must remain at room temperature without freezing.

Warranty

Limited 10-year warranty. See nora® Limited Warranty.

For current nora® Installation Guides, Guide Specifications, Maintenance Guides, and Limited Warranties, please visit www.nora.com/us.

Updated: November 2018

nora systems, Inc.

9 Northeastern Blvd.
Salem, NH 03079
Toll free: 800-332-NORA
Phone: (603) 894-1021
Fax: (603) 894-6615
E-mail: info-us@nora.com
www.nora.com/us