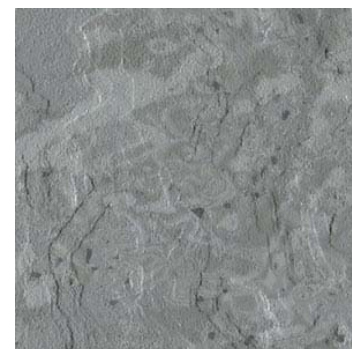


norament[®] arago

TILE

Rubber flooring with a landscape design, fine granules and modern marbling for extremely heavy traffic areas. No two tiles are the same – each one is totally unique.

- Good for very heavy traffic
- Superior footfall sound absorption
- Excellent slip resistance
- Increased safety thanks to high fire-retardant properties
- Seamless installation
- No coatings needed



Product Data

Product	norament [®] arago 3.5 mm tile resilient floor covering, Article 3118
Description	nora [®] vulcanized rubber compound 926 with environmentally compatible color pigments that are free of toxic heavy metals like lead, cadmium or mercury.
Characteristics	Material Size: 39.53 inches by 19.76 inches (1004 mm by 502 mm) Thickness: 0.14 inches (3.5 mm) Dimensional Stability: Meets requirements Composition: Homogeneous rubber compound with a random scattered design Colors: 12 Standard Surface: Landscape

Technical Data

Static Load Limit	ASTM F970, Residual compression of 0.004" with 800 lbs. ≤ 0.005" with 250 lbs. is required
Rolling Load Limit	≤ 850 lbs. /sq. inch; for forklift traffic nora polyurethane adhesive is required
Slip Resistance	ASTM D2047 Static coefficient of friction, Neolite dry 0.81 Neolite wet 0.87 ≥ 0.5 is required (not recommended for ramps)
Flammability	ASTM E648; NFPA 253; NBSIR 75 950, 0.92 Class 1, ≥ 0.45 watts/sq. cm is required
Smoke Density	ASTM E662; NFPA 256; NBS, 267 (flaming) and 130 (non-flaming) < 450 is required
Bacteria Resistance	ASTM E2180 and ASTM G21, resistant to bacteria, fungi, and micro-organism activity
Sound Absorption	ASTM E2179; ISO 140, Δ IIC 15, Lw10dB (compare only Δ values)
Hardness	ASTM D2240, Shore type "A", 82 achieved, ≥ 70 is required
CAN/ULC-S102.2	Surface Burning, FSC1 of 75 and SD of 470

Environmental Attributes

Transparency	Environmental Product Declarations (EPD), Health Product Declarations (HPD) and Cradle (C2C) documentation is available for standard norament [®] and noraplan [®] floor coverings; for information visit www.nora.com/us
Manufactured Without	PVC (polyvinyl chloride) Plasticizers (phthalates) Halogens (chlorine)
Production Plant Certifications	ISO 9001:2000 ISO 14001
VOC Emissions	GREENGUARD Gold Certified for Low VOC Emissions CA 01350 Compliant

Installation

Site Conditions	The installation area must be fully enclosed, weather tight, and climate controlled between 63°F and 75°F and 40% to 60% ambient relative humidity (RH) for at least 48 hours prior, during and 72 hours after installation.
Adhesive	Absorptive substrates: use nora [®] AC 100, PU 102 or dryfix 750 adhesives Non-absorptive substrates: use nora [®] PU 102 or dryfix 750 adhesives
Unique Characteristics	Welding not required Tile design allows for various design layouts, as well as the flexibility to change the aesthetics of seamless installation with a cold welded or beveled joint

For complete installation instructions, refer to the nora[®] Installation Guide.

Care and Cleaning

A post-installation cleaning must be performed before the area is occupied.

Refer to the norament[®] Maintenance Guides.

Wheel Types

No metal or hard plastic wheels, the shape of the contact surface of wheels must be flat with round edges. The shore hardness must be type A ≤ 90.

Storage

nora[®] flooring can be stored within a temperature range of -5°F (-21°C) to 120°F (49°C) under the following conditions: Pallets shall remain intact, undamaged, not be stacked, be in a permanently dry environment, and with no direct sunlight. However, all adhesives and cold weld must remain at room temperature without freezing.

Warranty

Limited 10-year warranty. See nora[®] Limited Warranty.

For current nora[®] Installation Guides, Guide Specifications, Maintenance Guides, and Limited Warranties, please visit www.nora.com/us.

Updated: November 2018

nora systems, Inc.

9 Northeastern Blvd.
Salem, NH 03079
Toll free: 800-332-NORA
Phone: (603) 894-1021
Fax: (603) 894-6615
E-mail: info-us@nora.com
www.nora.com/us