

Installation recommendation for noraplan[®] nTx (mineral subfloor, floor on floor)

The **mineral subfloor** must fulfil the requirements of the country-specific standards regarding the readiness for installation.

noraplan[®] nTx can also be installed on existing smooth floor coverings (e.g. rubber, linoleum, PVC) as well as on other subfloors (e.g. wood, aluminium). These, however, must be permanently and securely bonded to the subfloor and must not have any cavities. It is therefore necessary that the responsible technician examines the flooring and makes an appropriate recommendation. When installing floor on floor point 3 (Levelling work) is not necessary as a rule.

It is possible to install nora[®] nTx on heated subsurface constructions without any restrictions, if an appropriate heating protocol is available and the required moisture values are observed.

At the time of installation and of adhesive bonding, the subfloor temperature must be **at least 15° C**. Ensure that the nora[®] nTx flooring has the required subfloor temperature. Especially in winter time, nora[®] nTx floor coverings have to be stored on site for several days.

Please make sure the material is properly stored on site. Rolls have to be stored upright!

Material defects which are visible before installation cannot be acknowledged when claimed after the installation.

We recommend to install noraplan[®] nTx tiles in broadloom fashion.

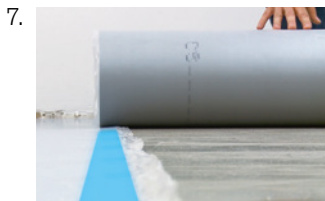
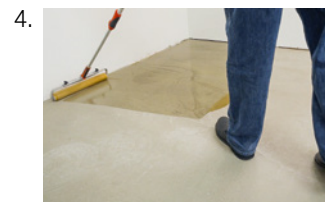
Please also see our "General remarks for the installation of nora[®] floor coverings, stairtreads and accessories".

1. Process the subfloor with the nora[®] nTx sanding disc (mineral subfloor) or single disc machine (floor on floor) until the surface is smooth and ready to install the new flooring.
2. Vacuum clean the surface.
3. Levelling work:
 - a) Level any unevenness with nora[®] SF 1001 or a suitable patching compound or, if necessary use nora[®] SF 1001 or a suitable patching compound for pore sealing.
 - b) If levelling is needed over the whole surface, level nora[®] L 1000 (or comparable) over the whole surface with a trowel.
 - c) When installing floor on floor remove damaged areas of the old floor covering and compensate with nora[®] SF 1001 or a suitable patching compound.

If the surface of the subfloor is dry, it is necessary to apply nora[®] PRP 101.

4. After leaving sufficient time to dry, apply nora[®] nTx 020 **thinly** using a short pile roller (**avoid puddling at all costs**).
5. After leaving sufficient time to dry (approx. 60-90 min. at 18° Celsius and approx. 65% rel. air humidity) re-sand the entire surface with a single disc machine.
6. Vacuum clean the surface.
7. Lay the complete surface with sheets of noraplan[®] nTx. Carry out the installation including seam cutting, as described in the installation recommendation for noraplan[®] (this can be found on our website).
8. Fold back half of the sheets.
9. Remove the protective film from the rear of the sheet and turn down approx. 10 cm in the overlap area and push it under the folded back flooring. When doing this, make sure that there are no particles of dirt on the adhesive layer.

Tip: Do not scrunch the protective film remnants into a ball, lay the pieces on top of each other and then when the job is finished, roll it together. This minimises the amount of waste!
10. Vacuum clean the surface and insert the sheets.
11. Rub/roll on the flooring.
12. For the remaining areas proceed as described in points 8 – 11.



noraplan[®] nTx can be sealed with nora[®] hot welding rod or nora[®] 1-C joint sealing compound.

When carrying out a siteform-coving we recommend nora[®] Profix* for the bonding (see „Installation Recommendation - Siteform-coving“).

* or comparable product by a different manufacturer. The suitability and processing as well as the consumption of the chosen product can be gathered from the build-up recommendation and the technical data sheet.

Installation recommendation for norament[®] nTx (mineral subfloor, floor on floor)

The **mineral subfloor** must fulfil the requirements of the country-specific standards regarding the readiness for installation.

norament[®] nTx can also be installed on existing smooth floor coverings (e.g. rubber, linoleum, PVC) as well as on other subfloors (e.g. wood, aluminium). These, however, must be permanently and securely bonded to the subfloor and must not have any cavities. It is therefore necessary that the responsible technician examines the flooring and makes an appropriate recommendation. When installing floor on floor point 3 (Levelling work) is not necessary as a rule.

It is possible to install nora[®] nTx on heated subsurface constructions without any restrictions, if an appropriate heating protocol is available and the required moisture values are observed.

At the time of installation and of adhesive bonding, the subfloor temperature must be **at least 15° C**. Ensure that the nora[®] nTx flooring has the required subfloor temperature. Especially in winter time, nora[®] nTx floor coverings have to be stored on site for several days.

Please make sure the material is properly stored on site. The tiles all have to be stacked accurately, face to face and back to back.

Material defects which are visible before installation cannot be acknowledged when claimed after the installation.

We recommend to install square norament[®] nTx tiles in broadloom fashion.

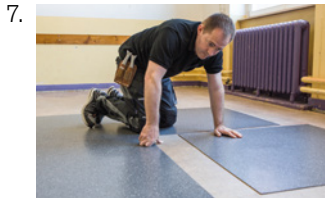
Please also see our "General remarks for the installation of nora[®] floor coverings, stairtreads and accessories".

1. Process the subfloor with the nora[®] nTx sanding disc (mineral subfloor) or single disc machine (floor on floor) until the surface is smooth and ready to install the new flooring.
2. Vacuum clean the surface.
3. Levelling work:
 - a) Level any unevenness with nora[®] SF 1001 or a suitable patching compound or, if necessary use nora[®] SF 1001 or a suitable patching compound for pore sealing.
 - b) If levelling is needed over the whole surface, level nora[®] L 1000 (or comparable) over the whole surface with a trowel.
 - c) When installing floor on floor remove damaged areas of the old floor covering and compensate with nora[®] SF 1001 or a suitable patching compound.

If the surface of the subfloor is dry, it is necessary to apply nora[®] PRP 101.

4. After leaving sufficient time to dry, apply nora[®] nTx 020 **thinly** using a short pile roller (**avoid puddling at all costs**).
5. After leaving sufficient time to dry (approx. 60-90 min. at 18° Celsius and approx. 65% rel. air humidity) re-sand the entire surface with a single disc machine.
6. Vacuum clean the surface.
7. Lay the complete surface with sheets of norament[®] nTx and cut to size. Make sure the arrows on the back are all pointing in the same direction. Ideally you should start from the centre of the room, so that the flooring has sufficient time to acclimatise.
8. Then likewise pick up the tiles from the centre of the room and either fold the protective film back in half or cut it in half and remove it.
9. Lay the tiles to the edge of the flooring of the adjoining tiles and rub them down, then remove the rest of the protective film and rub it down.

Tip: Do not scrunch the protective film remnants into a ball, lay the pieces on top of each other and then when the job is finished, roll it together. This minimises the amount of waste!
10. Follow this procedure to finish laying the complete room, rub down the flooring and then roller it.



norament[®] nTx can be sealed with nora[®] 1-C joint sealing compound.

When carrying out a siteform-coving we recommend nora[®] Profix* for the bonding (see „Installation Recommendation - Siteform-coving“).

* or comparable product by a different manufacturer. The suitability and processing as well as the consumption of the chosen product can be gathered from the build-up recommendation and the technical data sheet.